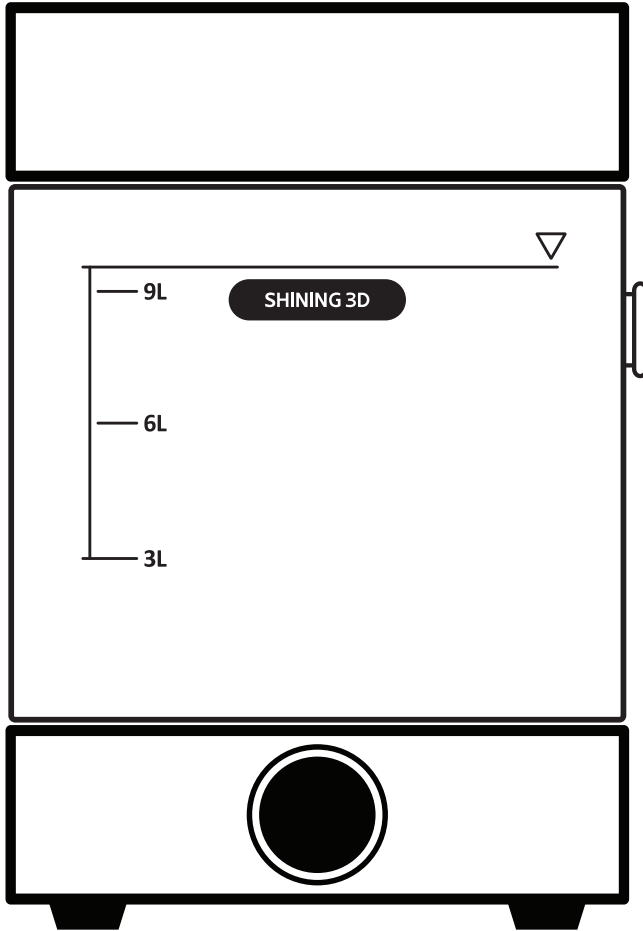




SHINING 3D



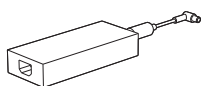
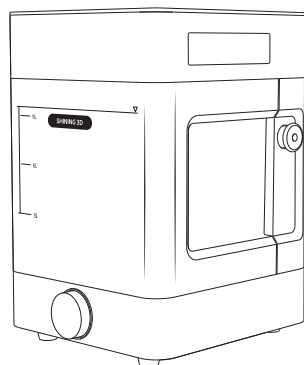
FabWash

Post-processing Unit

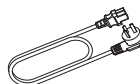
Quick Start Guide

What's in the Box

The FabWash is protected by foam inserts around the machine. During unpacking, inspect the FabWash for any damages or missing items.



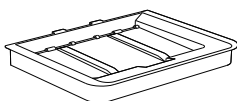
Power Adapter



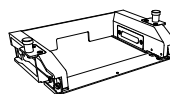
Power Cable



Quality Certification



Inner lid

D1s Ceramic Platform
Adaptor (optional)

Quick Start Guide

Product Overview

1. Knob Turn or press to select, start or end a wash cycle.

2. Tool Storage Store scrapper, brush or other tools.

3. Basket Holds prints being removed from build platform to wash.

4. Blade Remove the prints from the build platform Automatically.

5. Impeller Circulate the washing solvent in the wash chamber.

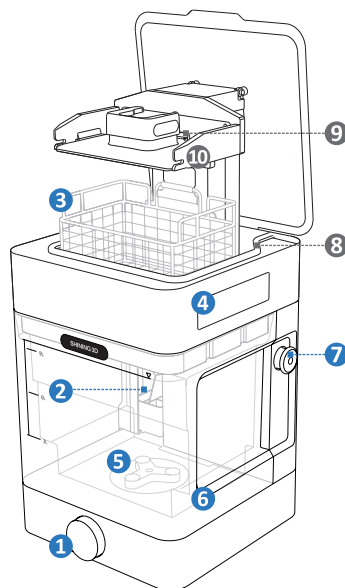
6. Wash bucket The container holds the solvent for washing the prints.

7. Emergency stop button Push the button to switch off the FabWash in order to prevent an accident.

8. Anti-pinch sensor Switch off the FabWash if the sensor has any shape changes.

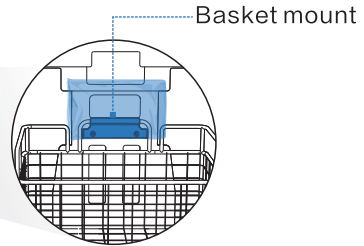
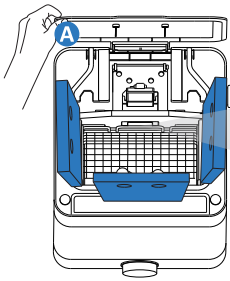
9. Build platform sensor Make sure the build platform is in position before washing.

10. Platform mount Holds the build platform.



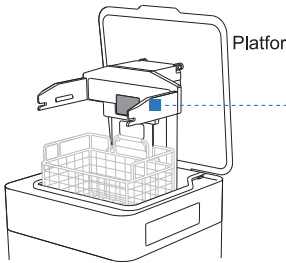
Installing Fabwash

- A** Open the outer lid and Remove the **foam inserts** in the wash bucket. Make sure the basket hangs on the **basket mount** before power-on.

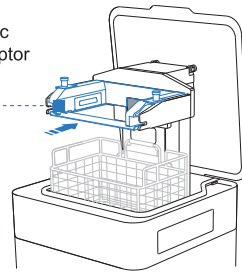


- ⚠** After turning on the machine, the tape at the cleaning basket needs to be removed

- B** Adding a platform adaptor work of the D1s printing platform.

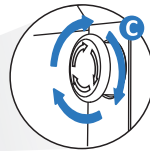


D1s Ceramic Platform Adaptor

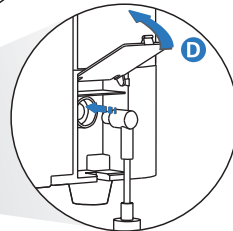


- C** Turn to release the emergency stop button.

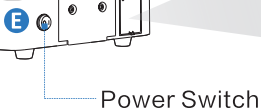
- D** Use the provided power cable and adaptor to plug the FabWash into the power supply.



Turn to release



Rotate to open the cover

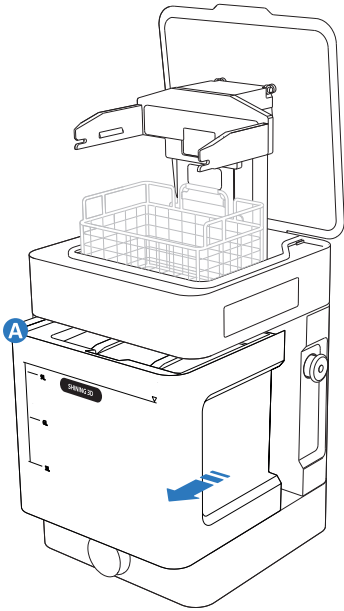


Power Switch

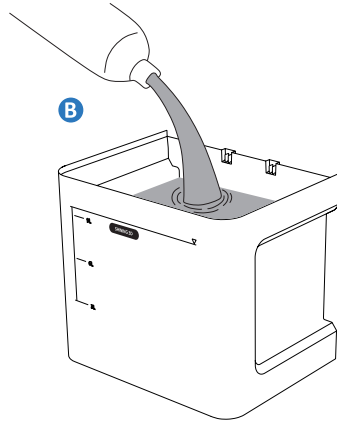
- E** Press the power switch to turn it on. The outer lid opens, and the platform mount and basket raise in position.

Add Solvent (IPA)

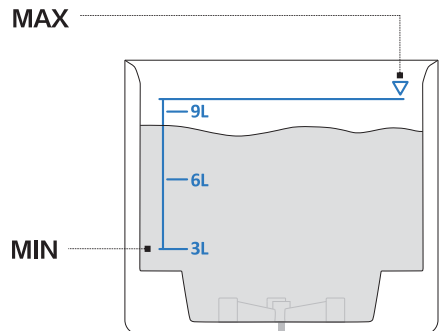
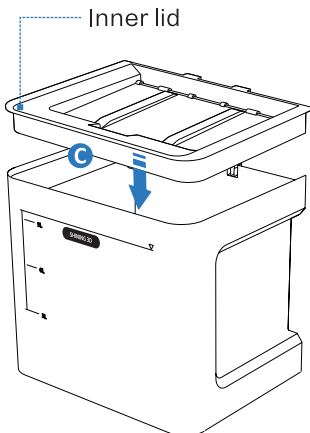
- A** Lift the wash bucket forward to remove it from the base.
- B** Pour the IPA to fill the wash bucket.



IPA > 95%



- C** After pouring into IPA, cover the inner lid. The IPA between 3L and the maximum fill line.

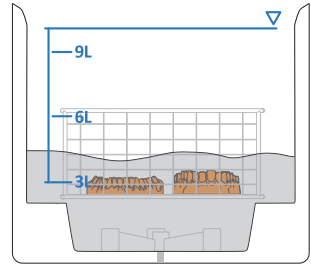


Washing solvent level

Fill the wash bucket with IPA to reach a suitable level.

Between 3L (minimum) and 6L

Wash only dental prints in the basket

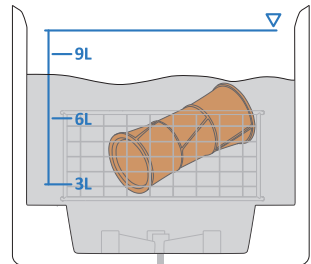


Between 6L and 9L

Wash other larger size prints or stack printing dental models



To prevent the IPA from overflowing, consider how much IPA a print part will displace before washing a large print.

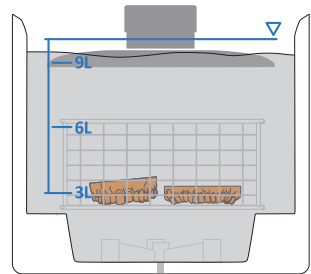


Between 9L and ▽ (maximum)

Wash both dental prints and platform simultaneously



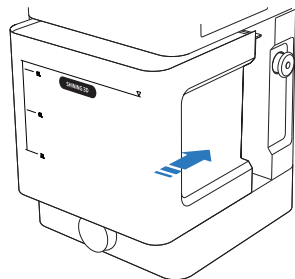
Remove some IPA from the bucket before washing a larger print and platform simultaneously.



Install the inner lid directly onto the top of the wash bucket. Insert the wash bucket into the FabWash.

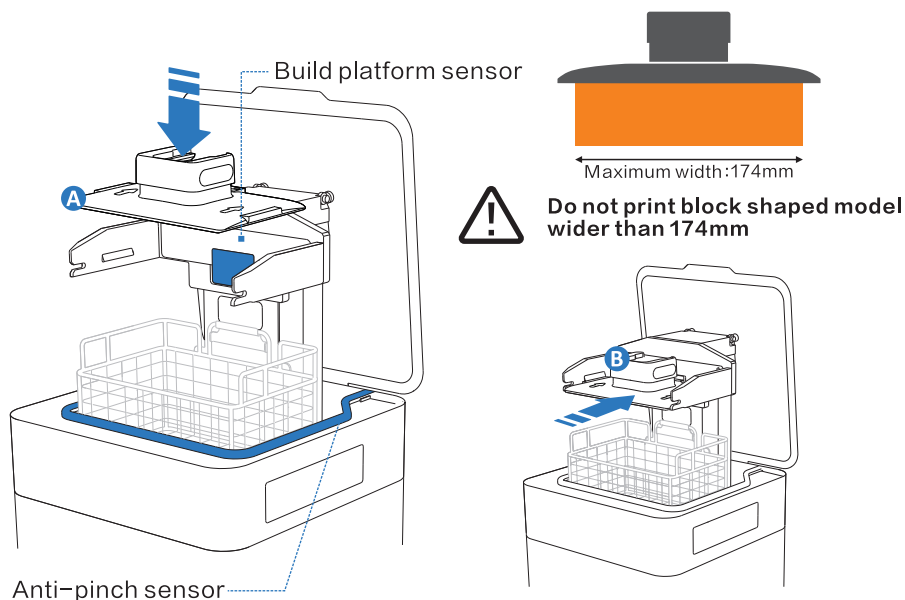


For the cleanest wash, periodically change the IPA and clean the wash bucket.



STEP 1 Place prints

- A Make sure the arrow on the platform points to the sensor. Align the side edges of the build platform with the mount arms, then gently push the platform down until it click into place.
- B Insert the build platform and make sure the side of the platform touches the sensor.



Do not reach your hands into the FabWash or press the Anti-pinch sensor when the build platform mount is moving.

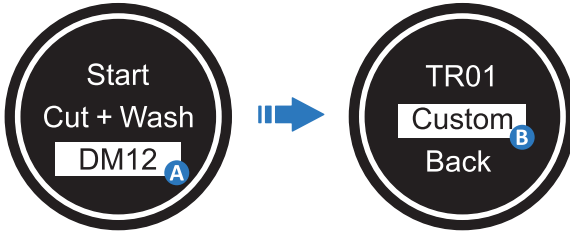
STEP 2 Set operation mode

- A Rotate the knob to move between items in the display menu.
- B Press the knob to select or confirm an option on the display.



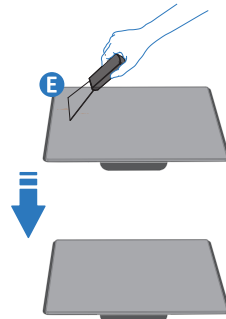
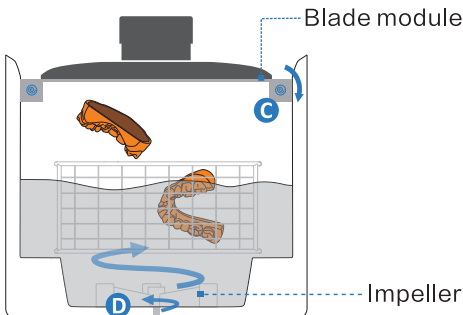
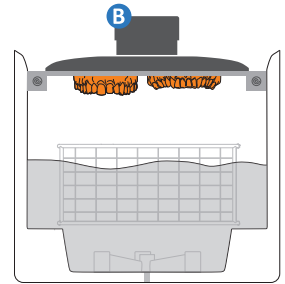
STEP 3 Set wash time

- A Shining 3D material prints' wash time has been pre-imported into the system. Select the corresponding material to set the wash time.
- B Select **Custom** to set wash time for 3rd party material.



STEP 4 Start wash cycle

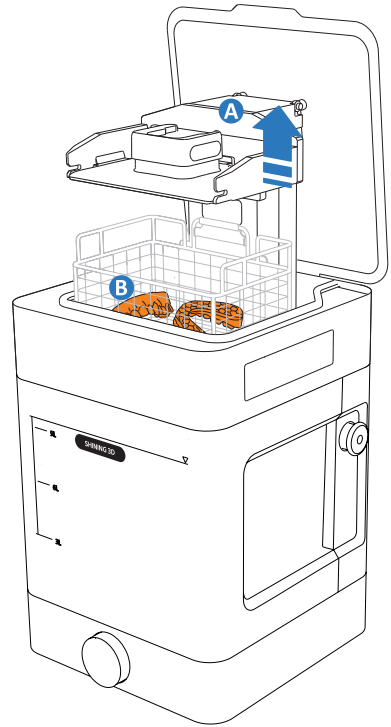
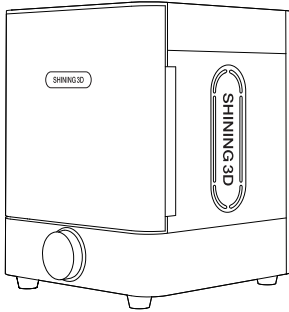
- A Select **Start** and push the knob to start current set wash cycle.
- B Start with build platform and basket lowered and the outer lid closed.
- C When the screw rotating, the blade moves forward to remove the prints from the platform.
- D The impeller at the bottom rotates to circulate the solvent to wash the prints.
- E After automatic shoveling, if there is any small debris resin on the platform, please clean it with a blade and wipe it clean before using the platform to print the model.



STEP 5 Dry prints

- A** The build platform and basket raise automatically at the end of the wash cycle.
- B** Allow prints to dry for at least 10 minutes after washing.
- C** After washing and drying the prints, use the FabCure 2 to post-cure the prints to improve material properties.

C FabCure 2



Sleep mode

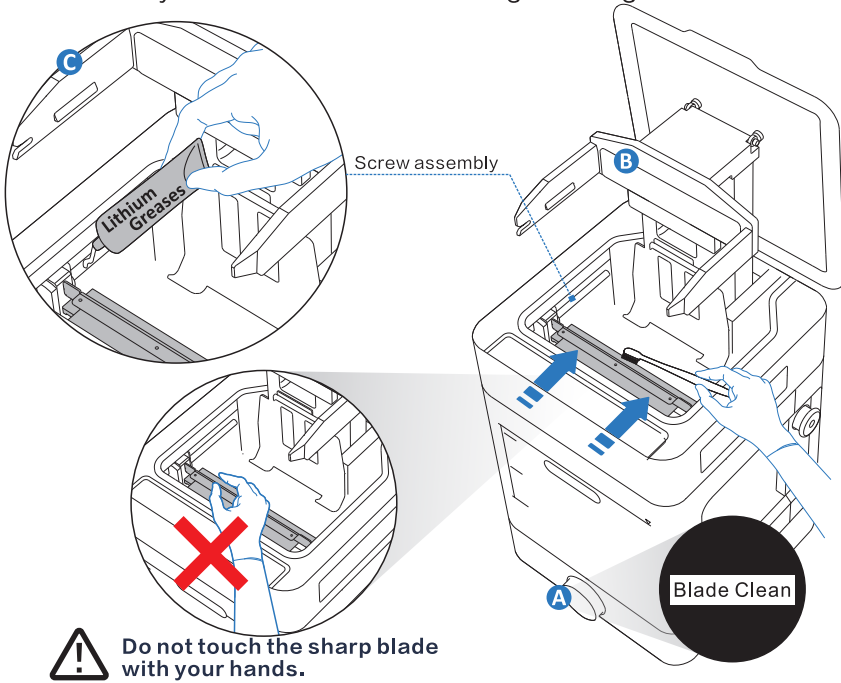
Remove the prints and the build platform from FabWash. Select and confirm the Sleep on display. The platform mount and basket lower, and the outer lid closes to prevent the solvent from dusting and limit evaporation.



Scan QR code for FabWash operation video.

Clean the blade

- A** The basket lowers to allow the blade moved out, clean the both sides of the blade using the brush.
- B** Turn the knob to navigate the menu and press to select and start the blade cleaning mode.
After cleaning, select **Back** and press the knob to move the blade back to position.
- C** Periodically lubricate the screws using lithium grease.

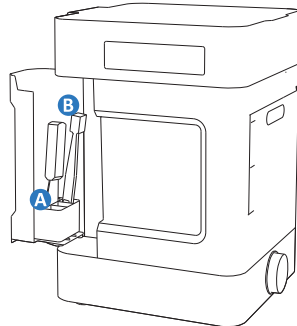


Do not touch the sharp blade with your hands.

Tool Storage

Place tools in the tool storage in the back of the FabWash.

- A Scraper** Use to remove prints from the build platform.
- B Brush** Use to clean the build platform, wash chamber and blade.



Important safety precautions for using FabWash:

- A** Ventilate well. When using organic solvents such as alcohol indoors, ensure good ventilation.
- B** Appropriate liquid level. Add an appropriate amount of cleaning solution, not exceeding the Max liquid level line.
- C** Use environment. Thoroughly remove flammable and combustible materials around the place of use. No heat sources or open flames are allowed around the place of use.
- D** Safe storage. After the cleaning bucket is filled with cleaning solution, please install the cleaning bucket cover plate in time. The FabWash device and the FabWash cleaning bucket should be stored in a dark and cool place, and do not place them in environments where there is sunlight exposure, heating sources, etc.
- E** Emergency disposal. If alcohol leaks, clean it up in time. Alcohol accidental ignition can be extinguished with dry powder fire extinguishers, carbon dioxide fire extinguishers, etc., and small-area fire sources can also be covered with wet towels and wet clothes to extinguish the fire.

Technical Specifications

Product Name	FabWash
Maximum Part Size	180 x 124 x 120mm
Maximum Solvent Volume	9.5L
Interactive Mode	Knob with 1.54 inch OLED screen
Power Requirments	AC: 100–240V 2.0A 50/60Hz; DC: 24V, 150W
Operating Temperature	10°C–30°C
Storage Temperature	–10°C–70°C
Product Dimensions	302 x 327 x 752mm
Shipping Dimensions	425 x 425 x 590mm
Product Weight	15KG
Shipping Weight	20.5 KG



SHINING 3D

Technical Support

Register at <https://support.shining3ddental.com/en/support/home> to submit a support ticket and track your ticket status.

Follow Us

Suggest visiting our YouTube channel to watch how-to videos and subscribe to view the latest videos of the products.

Facebook: <https://www.facebook.com/shining3d.dental/>

Instagram: <https://www.instagram.com/shining3ddental/>

YouTube: <https://www.youtube.com/@SHINING3DDental>

APAC Headquarters

SHINING 3D Tech. Co., Ltd.

Hangzhou, China

P: +86-571-82999050

Email: sales@shining3d.com

No. 1398, Xiangbin Road, Wenyan,
Xiaoshan, Hangzhou, Zhejiang, China,
311258

EMEA Region

SHINING 3D Technology GmbH.

Stuttgart, Germany

P: +49-711-28444089

Email: sales@shining3d.com

Breitwiesenstraße 28, 70565,
Stuttgart, Germany

Americas Region

SHINING 3D Technology Inc.

San Leandro, United States

P: +1415-259-4787

Email: sales@shining3d.com

2450 Alvarado St #7,
San Leandro, CA 94577

www.shining3ddental.com